



June 1999

Issue #6

The Whirlie Wire

Published by the Greensboro Grimsley Senior High School Alumni & Friends Association



Honoring our past paves the way for our future. This photo remembers Greensboro High School's Juniors & Seniors from the 1899-1900 school year.

100 years. A century. Ten decades. History.

Greensboro Grimsley Senior High School has been a part of Greensboro, N.C. for nearly as long as the city has been here. It would be a fair assumption to say that anyone who has lived in Greensboro could never imagine this city without it.

And that's what our future is all about... honoring our past, preserving its integrity, and continuing the tradition of excellence at GHS by moving it into the new millennium. The Greensboro Grimsley Senior High School Alumni & Friends Association has made great strides in renovating the 70-year-old auditorium, supporting the efforts being made to renovate Jamieson Stadium, lighting and improving our baseball field, and building dugouts for the Girls' Softball field. Our athletic complex is becoming one of the finest in the

State and serves not only GHS students but the entire community. We awarded five more scholarships this Spring, purchased needed science equipment and art supplies, and are now beginning to tap into the technological needs of students in the 21st Century. But we don't want to let GHS students be left behind.

If we want to continue to attract the best faculty so that they may guide our children to a bright future, we must recognize their past accomplishments and address their future needs.

First and foremost, Grimsley must address an issue of safety. GHS is still served by its original phone system and teachers do not have phones in their rooms. Because of the college-style campus, students and faculty members tend to feel disconnected from the Administrative Staff. In the event of a medical emergency or

other crisis, getting assistance can take up valuable time. Principal Teague has asked the Association to make it a priority to work toward having a phone line installed in every classroom. Besides the obvious safety issues that could be expedited, teachers would have a valuable tool at their hands for after-school phone calls to parents, other teachers and resources.

Additionally, with a phone line in each classroom, the class could eventually be equipped with its own computer and internet connection. As we all know, technology is changing at lightning speed and students at the high school level are at a critical time to learn. With the internet as a resource, GHS not only needs the computers available to them in labs, they need them in each and every classroom.

With the opportunity to offer pre-engineering technology

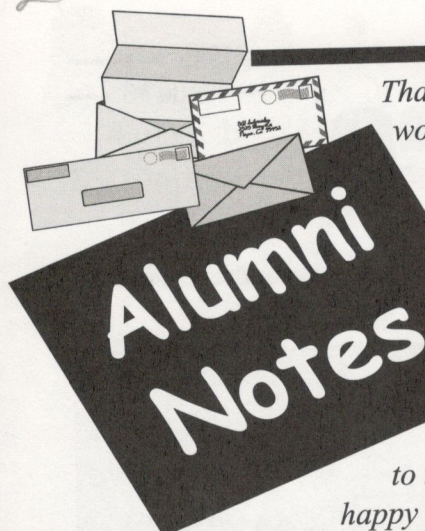
courses in the near future, Grimsley is also facing a renovation to create technical labs. It is critical that we recognize the need to catapult our school into the year 2000 with the technological and physical needs of the current students.

We have now gained the support of nearly 1,400 members in the Alumni & Friends Association and have received to-date \$184,673. Most recently we received our first gift to the Routh/Phillips Foundation, a \$15,000 donation from Frank T. Nickell, a graduate of the class of 1965. In this year, marking the Centennial of the school's history, what a tremendous way to say "thank you" to a meaningful part of their past, and to pave the way for the future of students yet to pass through the arches of the main building! Won't you do the same with your own donation?



check out our
website at

www.whirlies.com



Alumni Notes

Thanks to everyone for your wonderful letters about your memories of Greensboro Grimsley Senior High School, what you are doing today, and feed-back on the issues of the Whirlie Wire.

Although we were unable to include them all, we are happy to share some with you . . .

Frank T. Nickell '65 recently became the first member of the Routh-Phillips Foundation with a very generous gift of \$15,000 to the Greensboro Grimsley Senior High School Alumni & Friends Association.

Evelyn G. Edwards '31 is still living in Greensboro. She retired from teaching in 1978 after 36 years. She says she has "fond memories of GHS."

Jack B. Smith '41 and his wife **Ann Southerland '41** met in GHS Choir and became high school sweethearts. They are still singing together, in their Church choir, and are still sweethearts after more than 52 years of married life. All four of their children are also GHS graduates.

Bryce R. (Bobby) Holt '48 retired in October 1997 as President of Holt Textile Sales Company.

W. Brown Patterson '48 is a Professor of History at the University of South Sewanee, TN. Recently, he was awarded the Albert C. Outler Prize by the American Society of Church History for his book King James VI and I and the Reunion of Christendom (Cambridge University Press 1997).

C. Bert Wade Jr. '50 married his homeroom classmate **Ann Kirkman '50** in 1995, after reacquainting at their 40th class reunion in 1990.

Alton Lee Caviness '59 retired from Monsanto Co. and is currently teaching and consulting. His surgical device designs have been published in *Design News Magazine*.

Peter Weltner '60 has a new novel How the Body Prays that was published in May 1999 by Graywolf Press. His story Movietone: Detour was published in Prize Stories 1998: The O'Henry Awards.

Cheryl Engels '65 is President of Partial Productions in Los Angeles, California. Her company provides audio post production services to recording artists U2, Sting, Melissa Etheridge and the Bee Gees.

CENTENNIAL CELEBRATION DANCE HUGE SUCESS!

On Saturday, February 6, 1999, more than 180 Greensboro Grimsley Senior High School Alumni and Friends danced the night away at the Realtor's Association Building in celebration of the Greensboro Grimsley High School Centennial. The Scott Adair Band played music spanning several decades and the food was provided by Caterfest. Thanks go to Scott

Adair and Dav Gerrells, the owner of Caterfest, who are both Grimsley High School Graduates. It was a great time to rekindle old friendships and visit with new friends and faculty.



Dav Gerrells
336.379.0746

CATERFEST

Creating Tasteful Memories

Diane Hines Reig '72 (formerly Diane Hines Owen) returned for the Centennial Celebration. Her family generational ties to GHS include: Mother Gloria Hogwood-Hines '40, Father Robert S. Hines '37, Uncles James Hines '35 and Dr. Martin Hines '41, Aunt Mary Carolyn Hines '33, and Great-Aunts Mary Ester Hines '06 and Annie Hines '11.

Emil Mitchell '80 earned her Masters in Social Work from USC in 1995. She was awarded the 1997 Central Unit Social Worker of the Year.

Van Alston '81 has opened his fourth club in Raleigh, The Lakeside Lounge, in March 1999. He also owns the Comet Lounge, the Brewery and Havana Deluxe.

Ryan L. Hunt '94 is currently serving as Aviation Electronics Specialist 3rd Class U.S. Navy in Bota, Spain.

Database Available

The database we have is available for use by GHS Alumni & Friends Association Members for reunions, social gatherings, etc. We

regularly update names & addresses as we receive corrections from our members. Please contact us if you have a need for our list or have changes to your current listing in our database. Write the Greensboro Grimsley Senior High School Alumni & Friends Association at P.O. Box 4248, Greensboro, N.C. 27404-4248 or visit our website at www.whirlies.com.

What are your favorite GHS memories?

Drop us a note about what GHS means to you and how it had an impact on your life. Send stories, photographs or corrections to previous issues of The Whirlie Wire to Greensboro Grimsley Senior High School Alumni & Friends Association, P.O. Box 4248, Greensboro, NC 27404-4248, or email us through our website at www.whirlies.com. Feel free to make suggestions of topics you would like covered in upcoming issues. Thanks for your input!



ADS FOR GRADS



This Fall we would like to begin offering to our Grimsley Alumni & Friends Association members the opportunity to advertise in our newsletters. Besides requests from Alumni, we made this decision in order to help cover some of the \$7-8,000 cost of each new issue. With the desire to plan three yearly issues (the eventual goal is four), this will allow us to save a significant amount of money that could then be redirected to the immediate needs of Grimsley.

With a list of more than 20,000 alumni (10,000 of which live in the Greater Triad Area), the advertisements would provide GHS grads with a means of connecting with a very special local market and a community with a common bond. These donations will represent both tax-deductible, charitable gifts as well as business expenses and every dollar will be used to benefit Greensboro Grimsley High School.

We encourage anyone interested in sponsoring an advertisement or just learning more about this program to contact David A. Heller '76 (336) 643-9535 or email dheller@bellsouth.net.

Whirlie Reunion Alert!

GHS

Greensboro Senior High School Class of 1929 --- 70th Reunion

Please contact Lucille Allred for details
(336)273-3894

Greensboro Senior High School Class of 1935 --- 64th Reunion

The Class of 1935 will hold their 64th Reunion in September 1999. For more details, please contact:

Betsy Wharton Newland
206-C N. Lindell Rd.
Greensboro, N.C. 27403
(336) 299-5620

Grimsley Senior High School Class of 1969 --- 30th Reunion

Planned for July 31, 1999
Please contact Reunion Management for details
(336)274-9230

Grimsley Senior High School Class of 1979 --- 20th Reunion

Planned for November 27, 1999
Please contact Reunion Management for details
(336)274-9230

Grimsley Senior High School Class of 1984 --- 15th Reunion

Date to be Announced
Please contact Wendy Leonard for details
(336)664-0409 or WenLen@aol.com

Grimsley Senior High School Class of 1989 --- 10th Reunion

Planned for October 16, 1999
Please contact Reunion Management for details
(336)274-9230

GHS FUNTASTIC FIFTIES REUNION



Classes of 1950-1962



You don't want to miss this!
Fall of 2000

Begin celebrating the start of the Millennium by returning to those magical '50s

This one will have it all!

Will you help by donating your time, talent and/or financial support? We look forward to hearing from you! Please call (336) 288-2304, e-mail JOlson6128@aol.com, or fill out the attached form and mail it to Keith Smith Olson.

Thank you, we hope you received our first mailing in April!

Name _____ Maiden _____ Class _____
Address _____
City _____ State _____ Zip _____
Phone _____ email _____
Please indicate your choice: Time _____ Talent _____
Financial support: Donation \$ _____
Up-Front Expenses \$ _____ (applied to reservation cost)

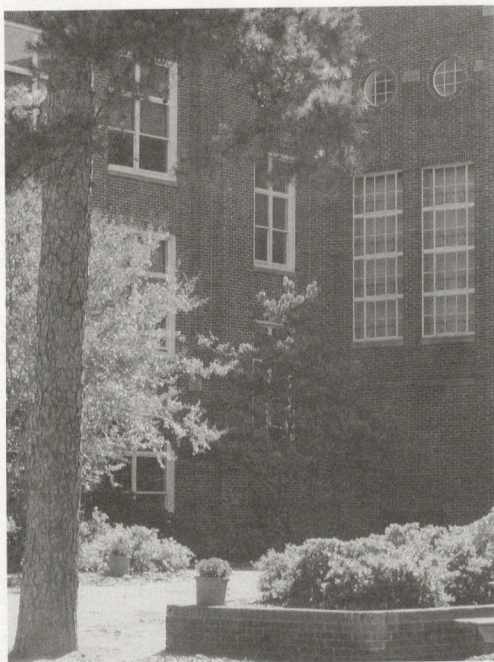
Loan \$ _____ (reimbursed after the event)

Please make checks payable to GHS Fifties Reunion and mail to Keith Olson, 2 Beach Grove Ct., Greensboro, N.C. 27455

~Fifties Entertainer at Gala
~Boar & Castle Corner with Jake's original Castleburgers
~Catered School picnic with Live Jazz
~Fabulous Raffle/Door Prizes
~Area Hotels/Hospitality Suites/Memorabilia
~Magical memories
and much more!

100 Years and Still Going Strong

In 100 years, it is probably safe to say that Greensboro Grimsley Senior High School has never seen an event quite like the one held to celebrate its Centennial birthday on Thursday, May 20, 1999. The presence of several hundred people filled the newly-renovated auditorium to pay tribute to GHS. They reminisced, cried and laughed at comments made about the school and faculty by notable GHS faces. Rick Dees '68, host of the popular syndicated radio program "Weekly Top 40," traveled all the way from the West Coast to help Grimsley celebrate its special night, and Herbert Hazelman spoke and debuted his newest piece of work entitled the "Greensboro Grimsley Centennial March" (he also wrote the school's alma mater back in 1949). After a two-hour concert series by the orchestra, the wind ensemble and the Madrigal singers, the groups received a standing ovation and the party moved to the gym for blue and white birthday cake and a chance to sort through years and years of GHS memorabilia!



Among the familiar faces in the crowd were Coach Bob Sawyer, who announced his retirement at the end of the 1998-99 school year, Mrs. Bob Jamieson, GHS historians Peter Byrd and Harry Bradley, former principals, teachers and students as well as current members of the Whirlie family and Mrs. Carolyn McNairy (1921), the oldest living graduate who was able to attend the Centennial Celebration, and her sister Dorothy (1924). It was a night that took enormous planning, led by the extensive efforts of Laurie Katz ---- who, by the way, has had no previous ties to Grimsley but said that she was so impressed with the genuine affection that everyone displayed toward the school, she became an Alumni & Friends Association member and is even talking of moving her family into the GHS district by the time her children reach high-school-age.

The love for Grimsley that Laurie Katz observed is exactly the reason that this Association exists, that Greensboro Grimsley continues to be so successful, has thrived in academic, social and athletic excellence for 100 years and will continue to do so for 100 more. The Centennial Celebration was an event that will not soon be forgotten and will take a lot to be matched in sentiment.

Priorities from the Principal by Jane Teague

BEAUTIFICATION

The campus of Grimsley High School is absolutely beautiful in the spring with the many flowering trees and azaleas. This beauty cannot be sustained without replanting and maintenance. The lack of electric outlets inside is matched by the lack of faucets outside. Can you imagine how difficult it is to water and take care of the key areas at Westover & Campus, at Westover & Benjamin and Benjamin & Campus?

Your class can make a tremendous difference in our continuing to look good. Please call Mrs. Teague if you are interested in adopting an area and she will hook you up with folks in the PTSA and on the school staff who need additional assistance. There are many beautification needs in addition to beautifying the grounds. The Class of 1933 paid to have our front granite power washed, and while you may not have noticed our bright new face, we sure did. Just know that whatever your interests are, Grimsley has an accompanying need and will benefit greatly from your involvement.

The simple truth is that the appearance of our campus no longer reflects the dignity and beauty of its great traditions, tremendous potential or the excellence of its students and faculty. This is a wonderful opportunity for classes, groups or individual alumni to get involved and make a difference!

THIS OLD HOUSE

While you were a student at Grimsley, you probably did not question the availability of phones. Would you believe that same system is still in place? Which means that we cannot call Guidance from the front office, we cannot call the gym from the front office, and no teacher has a phone in his or her room. Our phone system is archaic, with band aids applied decade by decade by decade. As the year 2000 approaches, each teacher needs access to a phone line for a medical emergency or for parent contact. Adults work at Grimsley seven days a week at all hours of the day and night and need access to a modern phone system.

Another need is for Grimsley students to have access to state of the art technology courses. We have an opportunity to include Scientific Visualization and Pre Engineering in our course offerings for this next fall. Federal funds will pay for the hardware and software for these two courses, but cannot pay for renovating classroom space. Unknown is what the Guilford County Commissioners will allocate for facility remodeling across the district and then which part of the allocation Grimsley will receive. \$20,000 will fund the project, making on large area into two adjoining tech labs.

These projects will benefit our students and teachers significantly. As you make contributions, you have the choice of specifying how that money will be spent.

A Sporting Note

from Coach Joe Franks '78

The last spring of the Millennium was a good one for Whirlies athletics. Our girl's soccer team returned to the state finals, a site that our seniors had capped off their freshman year with a state championship. Although we were state runner-ups, we put on a domination show during the playoffs including a 4-0 pounding of Page. Our boy's tennis team made it to the state semi-finals before losing a tough match to Myers Park. Our track teams shined as we had runners and jumpers get gold and silver.

What is truly outstanding about our spring in athletics occurred at senior awards day. Let me tell you about some of the award recipients. It will make you proud to be a Whirlie. Our athletic award winners are a great bunch.

The Roger Hobbs award went to Charles Shoffner. Charles participated in cross country, indoor and outdoor track. He was the silver medalist in the 400-meter run. What is neat about Charles is that he was a regional champion and state runner-up having to wear a cast for a broken wrist he suffered three days before the regional meet.

The Raymond Johnson award went to Mikel Casey. Mikel played tennis and soccer for us for 4 years, and I'll tell you what - she is tough as nails. I firmly believe she could have played free safety on the football team. Mikel came back after injury

numerous times in her career - never complaining - to help lead her teams into the playoffs.

The McDaniel-Lewis award as the best male athlete went to Bryan Smouse. Bryan, son of former football coach Jeff Smouse, was a three-sport athlete for the Whirlies who played football, basketball and golf. In his career, Bryan threw for over 5000 yards and rushed for over 1000. Those are impressive numbers!

The winner of the Girl's Athletic Association Award AND the John Dewey Award was Kim Jones. Now folks, if you don't know who Kim Jones is - you will. She is probably the most decorated female athlete to ever play for the Whirlies. Kim is a NINE-TIME State champion and a two time NATIONAL champion. Kim won 4 consecutive outdoor long jump titles, two consecutive outdoor hurdle titles, and 3 indoor jumping and sprinting titles. At this writing, she was preparing for another national meet, which is held the day before graduation.

Oh, did I mention that Kim was also in the band and played volleyball? Folks she is truly an outstanding young woman with character and class. She is the epitome of a true student-athlete. When they made her, they broke the mold.

The "Best All-Around" male and female as voted on by the senior class went to student athletes. Kim Jones, and Walker Holt. Walker was the conference basketball player of the year and has been named to all-state teams. The Ronald Reed Loyalty Award went to Abby Stallworth, a Whirlie swimmer for four years. We say that student-athletes can be role models. All of these fine young people are - and their peers recognize them as such. As alumni, these young people should make you proud that they are carrying on our fine traditions.



Lacrosse Team shines in '98-'99

If You Like Talking on the Phone, then Read On!

Our phonathon this past October was a tremendous success. Thirty-seven people volunteered three hours of their time to make calls to former classmates on behalf of our association. Not only did we all have a great time renewing old acquaintances, but we raised over \$35,000. Just imagine if we had seventy-five people making calls this October. Please consider being part of something that will assure the continued success of this association. On the last page of this newsletter, please mark the box, mail it in, and we'll get you involved.

Making Music

by Peter Byrd '74

There is not a great deal known about music at Greensboro High School in its earliest days. We do know that instruction in music was started in 1900 (the second calendar year of the school's existence), that a senior girls' vocal quartet and a choir called the "Chirpers" existed in the 1908-09 school year, that a boys' quartet performed during the following year, and that in the 1911-12 year GHS had both an orchestra and a mixed glee club.

Strong programs in choral music, band and orchestra emerged in the 1920s. Glenn Gildersleeve, on becoming GHS's Director of Music in 1923, inherited a small glee club and an orchestra, both of which grew rapidly under his leadership. H. Grady Miller, who had left a Broadway career to return to North Carolina, started the band in 1925. On Mr. Gildersleeve's departure in the late '20s, Earl Slocum became the orchestra director, and Mr. Miller added the chorus to his band duties. For several consecutive years the music groups won the state music championship (the trophies are in the Main Building trophy case) and the music department was known for its large scale productions of operettas (usually Gilbert & Sullivan) each year, featuring sets and costumes rented from New York.

The devastating effects of the Depression that hit Greensboro Senior High in 1933 (when the state took charge of running the public schools in North Carolina and local citizens failed to pass a bond to authorize extra money to supplement those provided by the state) included losing instruction in music, a situation which would not change until three years later when a local supplementary tax was finally approved.

The music program was reestablished at Senior High in 1936 and excelled quickly, with Herbert Hazelman directing the band and Raymond Brietz the choir. The singing of spirituals was the choir's trademark during Mr. Brietz's six years as director. Mr. Hazelman, who would conduct at GHS until 1978 — a total of 40 years minus the two years he served in the Navy during World War II — established a model school music program and was known for the superior quality of both his marching bands and his concert (later called "symphony") bands.

In 1941 J. Kimball Harriman took the baton to lead the orchestra (which had been reactivated the year before), a dynamic association that would last for more than two decades. Mr. Harriman encouraged the formation of string quartets and other ensembles, and his "Singing Strings" played at the Senior Tea for many years.

FINANCIAL STATEMENT

November 1996-May 1999

<i>Contributions</i>	
<i>from Members</i>	\$184,674.00
<i>Income from</i>	
<i>Centennial Dance</i>	\$2,801.00
<i>Interest Income</i>	\$ 911.00
<i>Total Operating Funds</i>	\$188,386.00
<i>Operating Expenses:</i>	
<i>Printing & Mailing Costs</i>	\$ 42,351.00
<i>Web Site Expenses</i>	\$ 3,885.00
<i>Other Production Costs</i>	
<i>& Operating Expenses</i>	\$ 8,352.00
<i>Total Operating Expenses</i>	\$54,588.00
<i>Net Income</i>	\$133,798.00
<i>Donations given to-date or committed to Active Projects:</i>	
<i>Auditorium Renovations</i>	\$40,000.00
<i>Jamieson Stadium Fund</i>	\$ 1,000.00
<i>Athletic/Weight</i>	
<i>Equipment</i>	\$ 3,456.00
<i>Lacrosse Team</i>	\$ 3,280.00
<i>Lighting of the</i>	
<i>Baseball Field</i>	\$ 13,629.00
<i>Annual Scholarships &</i>	
<i>Teacher Awards</i>	\$ 22,500.00
<i>Madrigals</i>	\$ 500.00
<i>Other Projects</i>	\$ 10,543.00
<i>[science equipment, english dept, art supplies, girls softball]</i>	
<i>Total Donations or committed</i>	
<i>Pledges to-date</i>	\$94,908.00
<i>Balance in Savings for</i>	
<i>continued operating costs</i>	\$38,890.00
and,	
<i>The Larry W. Saunders</i>	
<i>Scholarship Fund</i>	\$ 2,745.00

Eula Tuttle joined the ranks as director of vocal music in 1943, also remaining at GHS for over 20 years. "Tuttle" is remembered for writing and producing with Mr. Harriman elaborate musical shows for the choir and orchestra, for her "Queen's Men" quartets, and for the choir's signature pieces "Salvation is Created" and the "Battle Hymn of the Republic."

In 1960, because of the excellence of its music program, Greensboro Senior High was awarded a Ford Foundation composer-in-residence for two school years 1960-62. John Barnes Chance's first piece, Incantation and Dance, was dedicated to Mr. Hazelman and the GHS Band, and today remains a staple of band repertory — worldwide. That piece, along with Ballad and March for choir and band (just two of the many pieces that Mr. Chance wrote for GHS), was included on the concert those groups presented at the New

Hail to Mr. Hazelman

[Text from an article published in the Greensboro Music Academy's Spring 1999 issue of 'Prelude']

Greensboro Music Academy honored music educator, composer, and music advocate Herbert Hazelman at the fall Annual Meeting. Hazelman became the first recipient of GMA's Community Citizen Award. He was recognized for his outstanding leadership in the field of music.

It is fascinating to hear Hazelman talk about his career as a musician and composer. However, the many students he taught during his 30-year tenure at Grimsley High School remember him most for his "lessons for life."

In 1936 Guilford County needed a good band director and Hazelman was tapped for the job. Hazelman, one of the highest paid teachers in the county at the time, made \$125 per month. He has taught at every high school including Dudley High School, the only high school that African-Americans could attend at that time. Hazelman defied racial barriers to help provide what was best for his students.

In 1978, at age 65, Hazelman retired from teaching. He touched the lives of so many during his 30 years of teaching at Grimsley, formerly, Greensboro High School. You may recognize the names of some of his former students: Jim Melvin, Shelly Morgenstern, Herman Cone, Jr. and Rick Dees. Hazelman could have taught at the college level, but remained loyal and dedicated to high school music programs, his students and the administrators.

A native of Cherokee County, N.C., Hazelman graduated from Asheville High School. He played the oboe while attending the University of North Carolina at Chapel Hill where he had plans to one day become a psychologist or psychiatrist. In 1932, he composed his first published piece "The Maronic Dance" for ensemble performance. The orchestra conductor was so

impressed with the work that he wanted it composed for orchestra. Hazelman's music was performed by the North Carolina State Symphony and was one of the favored pieces on the program.

That same year Hazelman's music was played by the Washington National Symphony Orchestra in Washington, D.C.

Herbert Hoover was President at the time and could not attend the concert. However, Mr. Hoover did attend and Hazelman was bestowed the honor of sitting beside her. The First Lady described his piece as witty, charming, eloquently styled and the best on the program.

Hazelman, a member as ASCAP, has written many pieces since the 1930s, including a short ballet that is still played and has been choreographed for dance. Four or five of his pieces have been published, and he still gets royalties for his works.

In 1943 Hazelman married the former Mary Frances Bell, who was an English teacher. They have one son Thomas Casey and two grandchildren. Hazelman was a charter member of the North Carolina Symphony Orchestra, the North Carolina Bandmasters Association, and the North Carolina Music Educators Association. A GMA scholarship endowment started by his former student Neil Clegg has been named in honor of Herbert Hazelman.

Thank you, Herbert Hazelman, for every lesson you've taught for life.



*Herbert & Mary Frances
Hazelman*

CONTINUED>>>

York World's Fair in 1964. Another widely respected composer, M. Thomas Cousins, wrote numerous pieces for the GHS music groups in the '60s as well, including Barbara Allen and the three-movement Moses Symphony.

A second band – the Training Band (later renamed the "Concert Band") – was established in the late 1950s and for many years was conducted by Edgar Rooker. In the late '60s a stage band, known for playing swing music from the Big Band era, was formed by Kenneth Sampson and Charles Murph of the band staff and was immediately well received. Within a few years, the stage band evolved into a jazz band, and as such continues to excel today under current band director Forrest Munden. [Mr. Munden retired at the end of the 1998-99 school year, just after this article was written.]

In the fall of 1966, choir director Jeanne Meredith founded the Madrigal singers, an ensemble whose focus is Renaissance music. Over time this select group has also become known for its costumes reflecting this period. Under the leadership of Marta Force since 1978, Grimsley's choral program has brought both national and

international recognition to GHS in recent years, with performances in the last decade in Washington and New York City (including three trips to Carnegie Hall), in England and this spring in both Germany and Austria.

Over the years, many of Mr. Harriman's orchestra students have gone on to play in symphony orchestras all over the U.S., and two of them returned to Greensboro, each serving as conductor of the GHS orchestra: Martha Leonard '54 and Jeannie Littlejohn Artley '60. Currently, Amanda Joy Weik conducts.

Other music directors and instructors at GHS over the years include: Choral – Sam Doyle, Ronald Hill, Carlotta Jacoby, Jerrye Mooring and Virginia Toenes; Orchestra – Diane Barbee, James Dellinger, Robert Fredrickson, Charles Jones, Jouis LaBella, Maureen Moore, Fred Rierson (husband of previous orchestra director Martha Leonard Rierson), and Shawn Suddeth; Band – Stephen Arichea, David Arner, Harry Booth, James Decker, Harris Mitchess, William Patnaud, Fred Rierson, Joseph Still, Stephen Stuber, and George Toenes.

A Letter from the President . . .

Our centennial year has been an enormous success, a celebration of the school's remarkable history and a recognition of its continuing contributions. An article on the splendid evening of music honoring Grimsley's one hundred years and the distinguished career of Herbert Hazelman is part of this newsletter. The Centennial Celebration was indeed a very special evening, a moment that left everyone connected to Greensboro Grimsley High School feeling proud, honored and thankful. As a representative of your organization, I was personally honored with the opportunity to speak that evening, to recognize our accomplishments and the challenges ahead. Even in this celebratory atmosphere, it was necessary to remind everyone of just some of the critical needs that are still without available funding. Priority needs at this time include replacing an unsafe and inadequate phone system and expanding the curriculum by creating new technology labs.

The reality we must all face is that these are only two of many urgent needs at GHS, and only a very small portion of the critical work that should be done. We have one of the finest high schools in North Carolina. Year after year our faculty and students are recognized for their outstanding achievements. Our tradition of excellence is unequalled. Yet this will not continue without help. As we enter a new millenium, unbelievable advances in technology are changing the way we live. They are also changing the way we teach and learn. Grimsley is entering this millenium with relatively primitive tools, handicapped by old technology or simply no technology. In order to give our students and teachers the oportunity to continue the tradition of excellence that you helped create and promised them to help continue, we must do more. It was our original goal to make Grimsley the model for the community of what private support of public education can do. IT IS TIME TO SIEZE THE MOMENT! We must not only continue to work for our current projects, but also begin an organized effort to inform the community of our goals and needs, to seek funding from charitable foundations, to pursue involvement and support from the corporate and business community, assist local efforts to improve government funding of our schools, and increase the membership and gifting of our own organization. What better way is there to celebrate and honor this school, to express gratitude and pride, than to make Greensboro Grimsley Senior High School the "jewel" of the system?

We can no longer accept the explanation that helping only one campus instead of all the schools in Greensboro would be unfair. This attitude has kept these community resources from helping ANY schools. That is what's unfair. It is time for all those in the community, in our entire country, to stop talking about the importance of education and the need to improve our schools, and start doing something about it. Our success in this effort can bring about the necessary awareness and become the role model for involving our community resources in partnerships with all of our schools.

The phone system presently serving Grimsley is indeed the original system. In the words of our pncipal Mrs. Jane Teague, "Would you believe that the same system is still in place, which means that we cannot call Guidance from the front office, we cannot call the gym from the front office, no teacher has a phone in his/her room. Our phone system is arhcaic, with bandaids applied decade after decade after decade. As the year 2000 approaches, each teacher needs access to a phone line for a medical emergency or for parent contact. Adults work at Grimsley seven days a week, all hours of the day and night, and need access to a modern phone system." With tragic headlines so fresh in our minds and school safety more a priority issue than ever before, it is simply unacceptable for our teachers and students to continue without an adequate phone system.

Another urgent request from the administration and faculty relates to our need to expand our curriculum to provide access to state of the art technology courses. We have the qualified teachers with the necessary knowledge, the hardware and software already funded and the students eager for Scientific Visualization and Pre-Engineering courses. These are valuable and innovative new programs, proper additions for a school with our academic reputation. As much as \$20,000 will be needed to remodel and create two adjoining tech labs.

We need your help. Not just your memberships and gifts, but also your involvement, your ideas and your energy. Those of you with connections to local business and corporate leaders must contact us and help us bring them into a partnership with GHS, a relationship built on the desire to improve education through financial and human resources, a sharing of not only desperately needed funds and equipment but time, knowledge, and priceless experience. Those of you that can influence the individuals, the foundations and other organizations that have the resources and the mission of improving the welfare of our community, must tell them of our goals, and our wish for their assistance is setting a new standard for public education through private support.

If you can help in any way, please contact any of us on the Board of Directors. We really are making a difference and we NEED YOUR HELP!

Sincerely,

Dr. Rick Andringa, President

Alumni Association Board of Directors

Dr. Rick Andringa, President
Mr. John Atkinson, Vice President
Mr. Stuart Albright '87, Secretary
Mr. Mike Boger, Treasurer
Mr. Marc Bush '69, Whirlie Wire Production Manager
Mrs. Brien (Rives) Deuterman '88, Whirlie Wire Editor
Mr. Bob Sawyer '55
Mr. Phil Weaver, Jr. '65
Mrs. Ruth Comer
Mrs. Keith (Smith) Olson '57

Mr. Larry Gildea
Dr. Jennifer (Wells) Martineau '84
Mr. Tim Weikel '66
Mrs. Melissa (Comer) Bateski '84
Mrs. Wendy (Thompson) Leonard '84
Mr. Joe Franks '78
Ms. Margaret Whitler '90
Mr. David A. Heller '76

also,

Mr. Peter Byrd '74
(Contributing writer)



1998 Graduates proud of their accomplishments

Honorary Board Members

Mr. Ethan Albright '89	Mr. R.L. Glenn '40
Mr. Carson Bain '34	Mr. Herbert Hazelman
Mr. Carl Carlson '32	Dr. Chris Ingram '87
Mr. Alan Cone '43	Mrs. Eleanor G. Jamieson
Mr. Herman Cone, Jr. '41	Mr. Jim Melvin '52
Mr. Rick Dees '68	Mrs. Emily Preyer '35
Mr. Brad Faircloth '48	Mr. Steve Showfety '65
Dr. Chris Fordham, III '43	Mr. Mike Weaver '55

These distinguished individuals have graciously agreed to sit as Honorary Board Members for this year. Please join them and other alumni & friends who want to be informed and involved.

Thank You!

Please note: The following contributors made donations between June 30, 1998 and May 31, 1999. Giving levels are cumulative. A complete list of donations received since November 1996 is available by request in writing. Thank you.

Name	Student Name	Class	Name	Student Name	Class	Name	Student Name	Class	Name	Student Name	Class
Routh/Phillips Foundation (\$10,000 or more)			Mrs. Athena Gallins	Pappas	1945	Mrs. M. Wallace Brooks	Clement	1959	Ken Ripley	Ripley	1973
Mr. Frank T. Nickell	Nickell	1965	Mrs. M. Elizabeth Carter	Shaffer	1945	Mrs. Martha Wright	Cone	1959	Mrs. Kathy Bender	Christian	1973
Ida Belle Moore Foundation (\$2,500-\$4,999)			Richard Stanford Travis	Travis	1945	Victor A. Sapp Jr.	Sapp	1959	Mrs. Teresa Brown	Truitt	1973
Ms. Mary Carolyn Hines	Hines	1933	Sylvia E. Lewis	Lewis	1945	Donald Dandliker	Dandliker	1960	Rodney L. Coleman	Coleman	1973
Stephen M. Cumbie	Cumbie	1966	Thomas E. Hayworth	Hayworth	1945	Edwin P. Pearce	Pearce	1960	Susy Wrenn	Wrenn	1973
Peter A. Byrd	Byrd	1974	W. D. (Buddy) Poole	Poole	1945	John L. Davis III, MD	Davis	1960	Alan Irvin	Irvin	1974
Jamieson/Sawyer Foundation (\$1,000-\$2,499)			Zeb N. (Z.) Holler Jr.	Holler	1945	Michael N. Wagoner	Wagoner	1960	Joseph L. Albright Jr., MD	Albright	1974
Carl Carlson	Carlson	1932	Joseph T. Melvin	Melvin	1946	Mrs. Lynn Smith	Westmoreland	1960	Mrs. E. Diane Cronin	Kersey	1974
C. Clifford Frazier Jr.	Frazier	1941	William T. Moore	Moore	1946	Mrs. Ruth E. Allred	Ennis	1960	Charles G. Monnett III	Monnett	1975
Horace R. Komegay	Komegay	1941	Edward A. Brown	Brown	1947	R. Walton McNairy	McNairy	1960	Mrs. Nancy Borum	Wagner	1975
Irvine S. (Sillus) Michalove	Michalove	1943	Bradley E. Faircloth	Faircloth	1948	Richard L. Bowen	Bowen	1960	Terry L. Christian	Christian	1975
J. Wayne Poole	Poole	1945	Bryce R. (Bobby) Holt Jr.	Holt	1948	Robert B. Murphy	Murphy	1960	David A. Irvin	Irvin	1977
Robert R. Sawyer	Sawyer	1955	Dr. W. Brown Patterson Jr.	Patterson	1948	Dr. Carl T. (Tommy) Whiteside	Whiteside	1961	J. Mark Trexler	Trexler	1977
H. Allen Andrew	Andrew	1958	Ervin S. Batchelor	Batchelor	1948	Donald E. Cunningham CPA	Cunningham	1962	John R. Cauble, Jr.	Cauble	1977
Harry Spence	Spence	1963	George Seay	Seay	1948	M. Henry Deal	Deal	1962	Mrs. Leslie A. Sward	Groome	1977
Kathy Totten	Howe	1966	Mrs. Mary Durland Fields	Sapp	1948	Mary Ann C. McFarland	Cavey	1962	Kendall H. Suh	Suh	1978
Timothy J. Weikel	Weikel	1966	Rodney D. Jackson	Jackson	1948	Mrs. Sandra Adams	Parker	1962	Lisa G. Wainer	Wainer	1978
Stewart P. (Tom) Mitchell	Mitchell	1967	William V. Ledford	Ledford	1948	C. Mitchell Oakley Jr.	Oakley	1963	Mary E. Carter MD	Allen	1978
Mrs. Nancy T. Abbey	Robertson	1970	C. Porter Neese	Neese	1949	Candace Bernard	Bernard	1963	William L. Ferguson	Ferguson	1978
Stephen A. Lambert	Lambert	1970	Harry N. Young	Young	1949	Mike Ephland	Ephland	1963	Alexander D. Mebane	Mebane	1979
Richard C. Bruning	Bruning	1972	Clarence Bertram Wade Jr.	Wade	1950	Mrs. Helen Price	Singleary	1963	Linda Travis	Wells	1979
Max Lloyd	Lloyd	1982	Mrs. Dorothy Collins	Buchanan	1950	Mrs. Janice Carole Clem	Crain	1963	Mrs. Sandra L. Slinkard	Pleasants	1979
John and Lea Atkinson	Atkinson		Mrs. Norma Glass Shepard	Glass	1950	Mrs. Kay W. Kane	Wharton	1963	Todd McCall	McCall	1979
Larry & Jan Keiner	Keiner		Dr. Robert M. Kriegsmann	Kriegsmann	1951	Albert S. Lineberry Jr.	Lineberry	1964	Brian E. Simpson	Simpson	1980
Rick & Fanny Andringa	Andringa		Fred Heath	Heath	1951	Billy B. Mims Jr.	Mims	1964	Dr. Mark Tedder	Tedder	1980
Robert C. Cone	Cone		Harold Eugene Alton	Alton	1951	Mrs. Beverly C. Nadel	Camras	1964	Clarke Goodman	Goodman	1981
Principal's Society (\$500-\$999)			John L. Irvin DDS	Irvin	1951	Mrs. Katharine P. Clendenin	Poer	1964	Eddie Morrah	Morrah	1981
J. Ernest Williamson	Williamson	1933	Lacy G. Baynes	Baynes	1951	Bradford Root, CPA	Root	1965	Suzanne Butler	Butler	1981
Guy L. Robbins	Robbins	1935	Mrs. Nancy Dever RN	Bulla	1951	John T. Lamb Jr.	Lamb	1965	Van Alston	Alston	1981
Charles L. Weill Jr.	Weill	1941	Ralph Barnes	Barnes	1951	Michael L. Schlueter	Schlueter	1965	David Wilkins	Wilkins	1982
Frederick C. Ayers	Ayers	1952	Robert Dever	Dever	1951	Mrs. Bry R. Russell	Richardson	1965	James W. Dowdall	Dowdall	1982
Dr. Jayne Standley	Marsh	1962	Frank L. Holt	Holt	1952	Mrs. Diane Mullins	Sproat	1965	M. Keith Lanier Jr.	Lanier	1982
Scott E. Reed	Reed	1966	Henry K. (Sonny) Brannon	Brannon	1952	Mrs. E. Frances Bennett	Benditz	1965	Mrs. Sunita Patterson	Chandra	1982
Jonathan Sparrow	Sparrow	1967	Mose Kiser Jr.	Kiser	1952	Mrs. Sarah Golden	Pearce	1965	Jeff Ferrell	Ferrell	1983
William E. Hall Jr.	Hall	1970	Mrs. Dorothy A. Kirkman	Stevenson	1952	Mrs. Taffi Winston	Winston	1965	Robert A. (Andy) Stoesen	Stoesen	1983
L. Richardson Preyer	Preyer		Mrs. Dorothy Burns	Dillard	1952	Ms. Vennie Owen	Owen	1965	Bernard G. Boka	Boka	1984
Sustaining Members (\$100-\$499)			Samuel L. Mingia	Mingia	1952	Philip J. Weaver Jr.	Weaver	1965	Melissa Bateski	Comer	1984
Paul C. Wimbish	Wimbish	1927	Charles D. Roberts	Roberts	1953	Richard Levy	Levy	1965	Mrs. Dawn Utecht	Swanson	1984
Charles F. Starnier	Starnier	1933	Clarence G. Hayes	Hayes	1953	Samuel Eaton	Eaton	1965	Patrick G. Parr	Parr	1984
Dr. Edward P. Benbow Jr.	Benbow	1933	Garnett L. Hughes	Hughes	1953	William Teague	Teague	1965	Wendy Leonard	Thompson	1984
Jesse C. Barber USN(Ret.)	Barber	1933	James S. Armstrong Jr.	Armstrong	1953	Alan Bardy	Bardy	1966	Mary M. Asbill	Doolan	1985
Mrs. Martha DeVane	Fry	1933	Joe LeBauer MD	LeBauer	1953	Candace Roper	Williams	1966	S. Craig Thompson	Thompson	1985
Ernest Curtis	Curtis	1935	John B. Sauvajot	Sauvajot	1953	Douglas M. Pait Jr.	Pait	1966	Susanne Rutishauser	Rutishauser	1985
Mrs. Marie Hughes	Yancey	1935	Mrs. Iris Haislip	Star	1953	James Neese	Neese	1966	Patrick M. Kubis	Kubis	1986
Michel Showfety	Showfety	1936	Mrs. Patricia G. Stengel	Gregg	1953	Kirk Crumpler	Crumpler	1966	Jeffrey P. Firestone	Firestone	1987
Mrs. Louise Overton Ravenel	Overton	1936	Robert G. Clark	Clark	1953	Mrs. Cathy Bradley	Herring	1966	John C. Leone	Leone	1987
Ronald W. Bolton	Bolton	1937	Robert W. Thompson	Thompson	1953	Mrs. Janice McNairy	Shew	1966	Mrs. Nettie E. McKee	Greene	1987
William G. Murray	Murray	1937	Donald S. Patterson	Patterson	1954	Mrs. Lynda R. Lee	Luter	1966	Ms. Jane R. Potter	Ritchie	1987
C.M. Aiken, Jr.	Aiken	1938	Dr. A. Kelly Maness	Maness	1954	Mrs. Peggy S. Casey	Stentz	1966	Susan C. Perini	Perini	1987
Martha Jean Cavan	Everett	1938	Henry C. Turner MD	Turner	1954	Steve Sparrow	Sparrow	1966	Adam Richman	Richman	1988
Mrs. Mildred Rives	Yost	1938	James H. Jones	Jones	1954	Dan C. Linker	Linker	1967	Cam Creech	Creech	1988
Mrs. Virginia Bennett	Barnes	1938	Mike Weaver	Weaver	1955	David B. Nickell	Nickell	1967	Jennifer G. Cross	Cross	1990
William L. Hemphill	Hemphill	1938	Mrs. Dava C. Cox	Cashwell	1955	Donna W. Regitz	Wamer	1967	C. Robin Britt Jr.	Britt	1991
H. Mark Altwater	Altwater	1939	Mrs. Marsha Scheer	Krieger	1955	G. Curtis Weaver	Weaver	1967	Wendy Ennis	Ennis	1993
Louis B. Hoffman	Hoffman	1939	Mrs. Sandra B. Richardson	Bentz	1955	John Daniel Huckabee	Huckabee	1967	Andrew Theodore Jordan	Jordan	1996
LTC E.C. Freeman USAF(Ret.)	Freeman	1939	Robert B. Dixon Jr.	Dixon	1955	Joseph R. (Jay) Pringle Jr.	Pringle	1967	Courtney Gray Savin	Savin	1997
Mrs. Jamie Sykes	Fowler	1940	Thomas R. Iseley	Iseley	1955	Mrs. Dana Suher	Blackwood	1967	Ann and Bill Atchison	Atchison	
Mrs. Mary Ellen McNeal	Russell	1940	Davis Wilson	Wilson	1956	Mrs. Diane Davis	Johnson	1967	Jeff and Laurie Katz	Katz	
Robert L. Glenn	Glenn	1940	H. Houston Groome Jr.	Groome	1956	Allen Gibbs	Gibbs	1968	Mike & Ginny Leone	Leone	
W.A. (Wayne) Cline MD	Cline	1940	Mrs. Louola Stanley	McCulloch	1956	Bill Seawell	Seawell	1968	Ruth Comer	Comer	
Dr. Martin P. Hines	Hines	1941	Mrs. Marie C. Hamill	Cardwell	1956	Dr. Dale T. (Putts) Finn	Finn	1968	Memberships (\$25-\$99)		
Jim Groome	Groome	1941	Samuel M. LeBauer MD	LeBauer	1956	J. Craig Cecil	Cecil	1968	Beverly C. Moore	Moore	1927
John Edward Faulkner Jr.	Faulkner	1941	Timothy C. Goodman	Goodman	1956	Mark Schlueter	Schlueter	1968	Mrs. Edythe Hill	Bennett	1930
John R. Maness	Maness	1941	Carey G. Cottle Sr.	Cottle	1957	Mrs. Deborah J. Bost	Jacobs	1968	Mrs. Evelyn G. Edwards	Garrett	1931
Peggy M. O'Connell	O'Connell	1941	Florence S. Weaver	Weaver	1957	Mrs. Jeannie Wright	Bird	1968	W. Clary Holt	Holt	1931
Robert A. Moore	Moore	1941	James A. Murphy	Murphy	1957	Ms. Lynne Crye	Bray	1968	J. Thomas Cox	Cox	1933
J. Bennett Newell	Newell	1942	James E. Kistler	Kistler	1957	Mrs. Nancy Bain	Rollins	1968	Mrs. Dorothy Frank	Goss	1933
J. Willard Hobbs	Hobbs	1942	Joe Bowles	Bowles	1957	Thomas W. Ross Sr.	Ross	1968	Mrs. Mary Duncan	Herring	1933
James B. Anthony	Anthony	1942	Mrs. Eyvonne Ledford	Home	1957	Timothy D. Johnson	Johnson	1968	Charlotte Barney	Porter	1934
Mrs. Doris O. Perper	Osborne	1942	Mrs. Keith Olson	Smith	1957	Ellen Blair Smith	Smith	1969	J. Burton Thompson	Thompson	1934
Mrs. Mattie Lee Hunter	Thomas	1942	Mrs. Mittie C. Hinshaw	Callisher	1957	Mrs. Laura Pendleton	Jeanes	1969	Lois Armfield	Russell	1934
Mrs. Phyllis F. McFarland	Fruitt	1942	Robert M. Teague	Teague	1957	Freddy H. Robinson	Robinson	1970	Mrs. Emily S. Kester	Sutton	1934
Ray C. Thompson	Thompson	1942	Robert W. Hubner	Hubner	1957	Jim Desper	Desper	1970	Herbert L. Hartsook	Hartsook	1935
Wesley E. Barnes	Barnes	1942	William H. Knight	Knight	1957	Mrs. Patricia Lee	Claytor	1970	Mrs. Adelaide Israel	Love	1935
Bruce C. Ritchie	Ritchie	1943	William L. O'Brien Jr.	O'Brien	1957	Mrs. Suzanne G. Payne	Gamer	1970	Roger W. Couch Jr.	Couch	1935
Christopher C. Fordham III	Fordham	1943	James L. Eskridge Jr.	Eskridge	1958	Phillip I. Osborne	Osborne	1970	J. Marion Wren	Galloway	1936
Harper J. (Jack) Elam III	Elam	1943	John Edgar Sockwell	Sockwell	1958	William Wilkins	Wilkins	1970	John W. Gehrke	Gehrke	1936
Martin M. Bernstein	Bernstein	1943	Kenneth J. Miller	Miller	1958	Burton F. Dodd	Dodd	1971	Lila J. Chandler	Chandler	1936
Mrs. Dacia King	Lewis	1943	Mrs. Barbara Hoard	Phillips	1958	Dale and Ann Stout	Stout	1971	Mrs. Alma Crumby	Wray	1936
Wallace Dayke Glen Fulton	Fulton	1943	Mrs. Marsha Slane	Bumpass	1958	John C. (J.T.) Tesh Jr.	Tesh	1971	Mrs. Lois Tally	Moffitt	1936
William H. Morrison Jr.	Morrison	1943	Mrs. Mary Berkelhammer	Murphy	1958	Mrs. Melinda Matthews	Borum	1971	Mrs. Marjorie McManus	Fields	1936
Carson H. Grantham Jr.	Grantham	1944	Mrs. Rachel Rogers	Jessup	1958	Mrs. Rebecca Scott Hollowell	Scott	1971	Norman W. Paschall Jr.	Paschall	1936
Claudius (Pete) Miller III	Miller	1944	Ralph Daniel	Daniel	1958	Mrs. Roselyn G. Powell	Powell	1971	Charles W. Lewis	Lewis	1937
Dorothy Jordan	Hunter	1944	Roy H. Michaux Jr.	Michaux	1958	Cyrus M. Johnson Jr.	Johnson	1972	Helen Lingle	Fondren	1937
Mrs. Ada Sue Jackson	McBane	1944	Alan S. Weinberg	Weinberg	1959	David V. Moore	Moore	1972	J. Ernest Starnier, Sr.	Starnier	1937
Mrs. Mary Elam ASID	Glendinning	1944	Ann Y. Tallman	Young	1959	Mrs. Jane Clark Lindie	Clark	1972	Mrs. Jane C. Brewer	Abermethy	1937
Bill Barber	Barber	1945	Benjamin G. Team Jr.	Team	1959	Ms. Diane Rieg	Hines	1972	Marveign (Marty) Wilkins	Cockfield	1938
Ernest B. Huffine Jr.	Huffine	1945	David V. Liner	Liner	1959	Arthur Winstead	Winstead	1973	Michael B. Fleming	Fleming	1938
J. Steve Julian	Julian	1945	J. Bennett Glass	Glass	1959	Blair Goodman	Goodman	1973	Mrs. Carolyn Bilyeu	Ballow	1938
Mary Jane Grantham	Brooks	1945	Kenneth E. Tutterow	Tutterow	1959	David Simel	Simel	1973	Mrs. Ernestine Huffman	Hobbs	1938
			Mrs. Barbara Hutcheson	Loverin	1959	Eleanor I. Cook	Cook	1973	Mrs. Jean Fuquay	Yates	1938
			Mrs. Beverly O'Grady	Troxler	1959	Howard Borum	Borum	1973	Mrs. Jean Parcel	Berbert	1938
			Mrs. Genie Schwartz	Sykes	1959	Karen Hanley	Hanson	1973			

Name	Student Name	Class	Name	Student Name	Class	Name	Student Name	Class	Name	Student Name	Class
Mrs. Jean Steele	Welborn	1938	W. Nolley Vereen Jr. PhD	Vereen	1947	George William Crawford Jr.	Crawford	1957	Ret Turner	Turner	1963
Mrs. Kathryn B. Wrenn	Berry	1938	Andrew Mellon Frazier	Frazier	1948	James Ebert	Ebert	1957	S.R. "Buddy" Rudd	Rudd	1963
Mrs. Laura Quinn	Brown	1938	Jack L. Richardson	Richardson	1948	Miles Frost	Frost	1957	Christopher L. Seawell	Seawell	1964
Mrs. Lois Wallace	Carnes	1938	MAJ James M. Scott USAF(Ret)	Scott	1948	Mrs. Barbara Kirschner	Dunlop	1957	Daniel F. Meyer	Meyer	1964
Mrs. Margaret Boxman	Little	1938	Mrs. Ann Collins	Harrington	1948	Mrs. Beverly Kuthbertson	Bason	1957	Dr. Ellen Thrower	Peebles	1964
Mrs. Viola Powell	Peeler	1938	Mrs. Patsy Ralls	Wagoner	1948	Mrs. Carroll Miller	Walker	1957	Gary S. Anderson	Anderson	1964
Mrs. Virginia Vaughn	Moore	1938	Mrs. Ruth Alston Forrest	Alston	1948	Mrs. Linda M. Temple	Myers	1957	Jerry W. Jernigan	Jernigan	1964
Robert A. Fleming Jr.	Fleming	1938	Chip Crews	Johnson	1949	Mrs. Ruth B. Jobe	Hunt	1957	Mrs. Carole S. Loflin	Smith	1964
Betty Roth	Chandgie	1939	James (Monk) Barbee	Barbee	1949	Mrs. Shirley Hamilton	Bernau	1957	Mrs. Dorothy K. Farlow	Key	1964
Ernest M. Cress Jr.	Cress	1939	James L. Baker	Baker	1949	Neil Jones	Jones	1957	Mrs. Ellen D. Walker	Dunford	1964
Henry W. Jacobs Jr.	Jacobs	1939	M. Alton Barnes	Barnes	1949	Ruth Mary Dailey	Stanley	1957	Mrs. MaryHobson Hennagin	Farr	1964
James H. Sparger	Sparger	1939	Mrs. Hope Gooch	Leonard	1949	W. David Miller	Miller	1957	Mrs. Nancy G. Walters	Greene	1964
Jay Shepherd	Shepherd	1939	Sidney Smith Jr.	Smith	1949	Clayton O. Stanley	Stanley	1958	Mrs. Parker Call	Norman	1964
John A. Black Jr.	Black	1939	Anne Long	Squires	1950	David A. Albaugh	Albaugh	1958	Mrs. Patricia R. Head	Reed	1964
L. M. Clymer II	Clymer	1939	John D. (Jack)	Gooch	1950	Josephine E. Banner	Banner	1958	Mrs. Sandra B. McCulloch	Butler	1964
Mrs. Jane Groome	Murray	1939	Kemp Clendenin Jr.	Clendenin	1950	Larry N. Heath	Heath	1958	N. Lewis Schloss	Schloss	1964
Mrs. Joan Cochran	Hunt	1939	Mrs. Betty Jackson	Talbert	1950	Mrs. Betty Anderson	Hackett	1958	Robert B. Kirkman	Kirkman	1964
Mrs. Margaret Caviness	Lewis	1939	Mrs. Emma P. Velis	Pickett	1950	Mrs. Carole Greene	Smithers	1958	Steve Hurst	Hurst	1964
Mrs. Margaret Sherry	Grantham	1939	Mrs. Jeanette Combs	Hester	1950	Mrs. Elizabeth H. Klemm	Harrell	1958	Charles L. Earl Jr.	Earl	1965
Mrs. Mildred Hudson	Calhoun	1939	Mrs. Margaret Merle Frazier	Cates	1950	Mrs. Glenda Heath	Sherrill	1958	Cheryl Engels	Engels	1965
Mrs. Ruth Foster	Smith	1939	Mrs. Rebecca Rucker	Frazier	1950	Mrs. Janet C. Zink	Coble	1958	Fred E. Ayers	Ayers	1965
Aubrey C. Apple	Apple	1940	Mrs. Ruth House	Knight	1950	Mrs. Kay Johnson	Tidwell	1958	Jerry L. Chostner	Chostner	1965
Mrs. Jeanne Edwards	Brantley	1940	P. Hutson Moody	Moody	1950	Mrs. Patricia Harriss	Ellis	1958	John L. Giles III	Giles	1965
Paul R. Ginnings	Ginnings	1940	Carol Ann Lee	Lee	1951	Peggy Clapper	Earle	1958	Katherine Courtney	Courtney	1965
Robert H. McGeachy	McGeachy	1940	Clinton E. LeGette	LeGette	1951	Alton L. Caviness	Caviness	1959	Margaret A. (Marty) Barber	Barber	1965
Charles V. Fiddle	Fiddle	1941	Delbert Parrish	Parrish	1951	Daniel (Allan) Nance	Nance	1959	Max K. Wilson	Wilson	1965
Ernest Ferris Jr.		1941	Harold Gomer	Gomer	1951	Frank C. Harmon	Harmon	1959	Mrs. Judith Smith	Lavine	1965
George P. Phillips	Phillips	1941	Mrs. Elizabeth Moody	O'Connor	1951	Frank Starmer PhD	Starmer	1959	Mrs. Judy C. Warren	Christiansen	1965
Harold C. Rhudy	Rhudy	1941	Mrs. Marie Caruthers	Craven	1951	Linda L. Griffin	Griffin	1959	Mrs. Mary Kay Teeter	Hackney	1965
Jack B. Smith	Smith	1941	Mrs. Pat Smoak	Rierson	1951	Mrs. Carolyn K. Hurst	Key	1959	Mrs. Mildred T. Dohm	Touchstone	1965
James P. Patton	Patton	1941	Mrs. Sara Haigler	Ferrell	1951	Mrs. Janice Kennedy	Dagenhart	1959	Mrs. Miriam Edmiston	Smith	1965
L. Vincent Wade	Wade	1941	Rosalind Willard	Fordham	1951	Mrs. Martha Blount	Spence	1959	Mrs. Rhonda Bentz	Bentz	1965
Mrs. Charlot M. Karesh	Marks	1941	Bobbie J. Phillips	Phillips	1952	Mrs. Mary (Betsy) Durrant	Glynn	1959	Rita Ellington	Ellington	1965
Mrs. Dale Clymer	Wamath	1941	Dr. Robert Bush Laughon	Laughon	1952	Mrs. Mildred Greeson	Blakey	1959	Mrs. R. G. Rives Jr.	Rives	1965
Mrs. Edith S. Kalmanson	Samet	1941	Edwin W. Pearce Jr.	Pearce	1952	Mrs. Suzanne Walke	Humphrey	1959	Robert Skenes	Skenes	1965
Mrs. Eleanor Dare Kennedy	Taylor	1941	Evelyn W. Stanley	Wall	1952	Mrs. Virginia Curtis	Ward	1959	Stephen Blackwood	Blackwood	1965
Richard F. Fidler	Fidler	1941	James C. Kirkman	Kirkman	1952	Ms. Mamie Chick Leemon	Hannah	1959	Anne Byrd Jones	Jones	1966
Shirley H. Davenport	Hanberry-Crotts	1941	Mrs. Betty Jane O'Connor	Davis	1952	Ms. Susan Caviness	Caviness	1959	Christopher Eiland Orlie	Eiland	1966
Sol B. Kennedy Jr.	Kennedy	1941	Mrs. Cammie Bell	Hunt	1952	Norman F. Carroll	Carroll	1959	Doris Rouse	Rouse	1966
Dr. Robert E. Clark	Clark	1942	Mrs. Terry S. Huffines	Stephens	1952	Robert M. Stanley	Stanley	1959	Ellen K. Bastron	Kay	1966
Marjorie Burns	Burns	1942	Bill D. Walke	Walke	1953	Ronald L. Moore	Moore	1959	Frank Roe Domer	Domer	1966
Mrs. Dorothy McMasters	Vamer	1942	Cecil E. Overbey	Overbey	1953	Sarah C. Newby	Newby	1959	Kathryn M. Holliday RN	Minton	1966
Mrs. Judith Bohrer	Ingram	1942	David A. Heinzmann	Heinzmann	1953	William R. Moser Jr.	Moser	1959	Mary Nelle Smith	Smith	1966
Mrs. Martha Jenkins	Sholar	1942	Gardner P. H. Foley Jr.	Foley	1953	Bayard B. Von Hermann	Von Hermann	1960	Mrs. Cathy Moss	Brown	1966
Mrs. Mary Hager	Lewis	1942	Hugh L. Geringer	Geringer	1953	Clyde W. Rudd Jr.	Rudd	1960	Mrs. Katharine Pearce	Pearce	1966
Rev. Fred P. Albright	Albright	1942	James E. Clark	Clark	1953	George B. Hardy Jr.	Hardy	1960	Mrs. Libba H. Weaver	Hackney	1966
Rev. Nicholas Salios II	Salios	1942	Mrs. Ann Kaufman	Falk	1953	James F. Parks	Parks	1960	Mrs. Marilyn Carter	Cain	1966
Robert G. Williams	Williams	1942	Mrs. Barbara Bowles	Farley	1953	Jeanne L. Tannenbaum	Tannenbaum	1960	Mrs. Martha Nance	Fenn	1966
Thomas Lindley	Lindley	1942	Mrs. Barbara H. Cox	Holler	1953	Jerry W. Bulla	Bulla	1960	Mrs. Paulette Ezzell	Poteat	1966
Walker F. Rucker	Rucker	1942	Mrs. Barbara Troutner	Still	1953	John D. Starr	Starr	1960	Reid Townsend	Townsend	1966
Charles Decatur Cunningham Jr.		1943	Mrs. Betsy Preston	Walker	1953	Joseph H. Rubin	Rubin	1960	Robert A. Fjeld	Fjeld	1966
David (Morris) Prince	Prince	1943	Mrs. Jeanette McBee	Oliver	1953	Laurie Lamb	Lamb	1960	Lynn Ross	Ross	1966
George C. Smith, Jr.	Smith	1943	Mrs. Joan King	Hester	1953	Lynn Boyce Purdie-Brennan	Boyce	1960	Donald Cohan	Cohan	1967
Hercules N. Kontoulas	Kontoulas	1943	Mrs. Julia H. Reeves	Hollowell	1953	Michael M. Thompson	Thompson	1960	Dr. Sarah Robbins	Ruffing	1967
Mrs. Betsy Jennings	Holt	1943	Mrs. Patricia Diggs	Joyce	1953	Mrs. Berry Stout	Thompson	1960	Kathleen Lange	Luebben	1967
Mrs. Betty Gale Sikes	Edwards	1943	Mrs. Shirley J. Simpson	Johannessen	1953	Mrs. Carolyn Worsham	Jones	1960	Mrs. Aileen Hatcher	Ponder	1967
Mrs. Helen Caviness	Massey	1943	Peggy Burton	Gibbs	1953	Mrs. Judith S. Lindsay	Stone	1960	Mrs. Charlotte O. White	O' Cain	1967
Mrs. Mary N. Lea	Neese	1943	Robert H. Wagner	Wagner	1953	Mrs. Julie Mahlin	Pinson	1960	Mrs. Julieanne Hambright	Dunham	1967
Mrs. Nita M. Bull	Davis	1943	William G. Hiatt	Hiatt	1953	Mrs. Mary Ann James	Crocker	1960	Mrs. Lynn M. Byrd	Marshall	1967
Mrs. Rachel Phipps	Johnson	1943	James M. Egbert	Egbert	1954	Mrs. Rebecca Ernest	Angel	1960	Randy D. Mims	Mims	1967
William N. Holt	Holt	1943	Janice L. Hepler	Hepler	1954	Mrs. Susan W. Horvath	Williams	1960	Thomas H. Edwards	Edwards	1967
Billie M. Propst	McNeely	1944	Mrs. Dorothy L. Noll	Phillips	1954	Peter Weltner PhD	Weltner	1960	Bob Roach	Roach	1968
George T. Ralls	Ralls	1944	Mrs. Frances Unruh	Stafford	1954	Ramon Neil Bell	Bell	1960	Elizabeth Normandy	Normandy	1968
J. Mack Albright	Albright	1944	Mrs. Martha L. Rierson	Leonard	1954	Roger H. Waring	Waring	1960	James C. Mitchell	Mitchell	1968
James Hedgpath	Hedgpath	1944	Mrs. Mary Ellen Baker	Kaelin	1954	Tommy Thompson	Thompson	1960	Malcolm McGregor	McGregor	1968
James Rawlins	Rawlins	1944	Ms. Kaye Graham	Banner	1954	Welby C. Rouse Jr.	Rouse	1960	Mrs. Ann Lynch Domer	Lynch	1968
Mrs. Aileen E. Jones	Mateer	1944	Ms. Miranda Lotz	Godwin	1954	David H. Hinze	Hinze	1961	Mrs. Carol Dixon	Benbow	1968
Mrs. Ann J. Wiebe	Jennings	1944	Ronald N. Lambe	Lambe	1954	David M. Schwartz	Schwartz	1961	Mrs. Carolyn Barham	Stiwell	1968
Mrs. Catherine Hunt Henson	Hunt	1944	Wayne W. Miller	Miller	1954	Douglas Lester	Lester	1961	Mrs. Cyndy Goodgame	Foster	1968
Mrs. Dilya Brown	Edmunds	1944	Donald R. DeSanto Sr.	DeSanto	1955	Lathan	Lathan	1961	Mrs. Jane H. Burton RN	House	1968
Mrs. Gwendolyn Moring	Tingen	1944	Harold L. Moss	Moss	1955	Martha J. Koletar	McKee	1961	Mrs. Lynn Melton	Greer	1968
Mrs. Jean Hepler	Story	1944	Mrs. Doris (Johnnie) Apple	Boliek	1955	Mrs. Barbara Price	Purgason	1961	Mrs. Sophia Fragakis	Toompas	1968
Mrs. Laurena Japenga MD	Booker	1944	Mrs. Jane Williamson	Cheek	1955	Mrs. Harriett Copland	Eiler	1961	Mrs. Susan Lee	McCormick	1968
Mrs. Mary Belle Petty	Teague	1944	Mrs. Kay Kidd	Stewart	1955	Mrs. Laura J. (Skipper) Ebert	Quinn	1961	Ms. Jeanne F. Perkins	Perkins	1968
Raymond Hepler	Hepler	1944	Mrs. Mary Anne Thomas	Boone	1955	Mrs. Linda B. Walters	Ball	1961	Robert C. Craven	Craven	1968
Dewitt Glasgow	Glasgow	1945	Mrs. Sue Rutherford	Hege	1955	Mrs. Mary F. Weir	Lund	1961	Brent Cousins	Cousins	1969
E. W. (Jack) Owen	Owen	1945	Phyllis Brooks	Brooks	1955	Virginia H. Woodhead	Hammon	1961	David Ferris	Ferris	1969
Eugene B. Sharpe MD	Sharpe	1945	Reuben B. Arthur Jr.	Arthur	1955	Carole Poole	Dodson	1962	Harold E. Rogers	Rogers	1969
Fred V. Trulove Jr.	Trulove	1945	Walter F. Martens	Martens	1955	Dr. Brock Wellons	Wellons	1962	Martha J. Venable	Venable	1969
Judith M. Goodman	Goodman	1945	William D. Mauldin	Mauldin	1955	Jerry L. Clark	Clark	1962	Mrs. Emily Jane Soapes	Williams	1969
Louise Woods	Woods	1945	Dr. James W. Martin	Martin	1956	Leslie Moser	Hamlin	1962	Mrs. Kathron Griffin	Glenn	1969
Paul A. Lawhorne	Lawhorne	1945	Elizabeth G. Stout	Stout	1956	Linda E. Lael	Lael	1962	Mrs. Linda Shaw	Willard	1969
Robert A. Maness	Maness	1945	Gail Staron	Kirkman	1956	Martha McKakin	McMakin	1962	Mrs. Patricia Harrington	Smith	1969
Robert W. McCuiston	McCuiston	1945	John A. Gardiner	Gardiner	1956	Mary Stowe Boyd	Boyd	1962	Mrs. Terry M. Ball	Mc Fetter	1969
Willard A. Gourley Jr.	Gourley	1945	John L. Atwater Jr.	Atwater	1956	Mrs. Carol Caton	Roberts	1962	Ms. Susan M. Williford	Monroe	1969
William K. Phipps	Phipps	1945	Mrs. Carolyn P. Moury	Paschal	1956	Mrs. Lucile O. Dole	O'Brien	1962	Rendy Rendleman	Rendleman	1969
William M. Davis	Davis	1945	Mrs. Miranda Miles	Bumett	1956	Raemon M. Polk	Polk	1962	Robert M. Meacham Jr.	Meacham	1969
Charles D. Hudson	Hudson	1946	Mrs. Rebecca Taylor	Walters	1956	Sarah C. Lineberger	Collins	1962	Carroll Phillips	Phillips	1970
Herbert W. Smith	Smith	1946	Mrs. Sue DeSanto	Kimel	1956	Steve Farrington	Farrington	1962	Larry Ronald Barney	Barney	1970
Brooks W. Gilmore MD	Gilmore	1947	Peggy Mauldin	Durham	1956	Bob Nuckolls	Nuckolls	1963	Leslie Pemberton	Christian	1970
Joe F. Manson	Manson	1947	Roger Wendell Frost	Frost	1956	Cam Harris	Harris	1963	Mrs. Barbara A. Rabold	Rabold	1970
Lucile Wesson	Driver	1947	Becky Wright Carter	Wright	1957	Dr. Barbara Keim	Howell	1963	Mrs. Debra J. Ladd	Cockerham	1970
Mrs. Barbara Yates	Hovis	1947	Bill Cloninger	Cloninger	1957	Fred Nimer	Nimer	1963	Ms. Patricia Smith	Neese	1970
Mrs. Christine Demosthenes	Moutafis	1947	Bobby Johannesen	Johannesen	1957	Mrs. Brenda Harrell	Cummings	1963	Polly Davis	Teague	1970
Mrs. Jessie Macon Edwards	Sapp	1947	David C. Winfree	Winfree	1957	Mrs. Engle Paschal	Wimbish	1963	Debra C. Beatty	Beatty	1971
Mrs. Margaret C. Eckelmann	Alston	1947	Doug Orr	Orr	1957	Mrs. Jane Miller	Reed	1963	Dr. Gaines M. Hunter	Hunter	1971
Mrs. Mary Lou Davis	Monnett	1947	Edward Holden Sr.	Holden	1957	Mrs. Lola Weikel	Curley	1963	Glenn D. Rayle	Rayle	1971
Mrs. Stella Rasp RN	Poulas	1947	G. Lee Cory	Cory	1957	Mrs. Sue Kurtz	Yelverton	1963	James M. Ward Jr.	Ward	1971
Mrs. Virginia L. Gourley	McDade	1947	G.R. (Ronny) Buchanan	Buchanan	1957	Randy J. Weikel	Weikel	1963	Jeffrey A. Thompson	Thompson	1971

Name	Student Name	Class	Name	Student Name	Class	Name	Student Name	Class	Name	Student Name	Class
Matthew A. Lojko Jr.	Lojko	1971	Michael N. Tilley CLU	Tilley	1977	Ben Whitehouse	Whitehouse	1986	Sarah Louise Atkinson	Atkinson	1997
Mrs. Alice Hill	Levy	1971	Mrs. Jean Moore	Powell	1977	Cynthia A. Johnson	Johnson	1986	Brooke Langfor Roper	Roper	1998
Mrs. Carol B. Connery	Bowden	1971	Mrs. Nancy Michaels	Porter	1977	David M. Johnston PhD	Johnston	1986	Cori Stevens	Stevens	1998
Mrs. Linda B. Hobson	Briggs	1971	Steve Theriot	Theriot	1977	George O. (Neal) Binder	Binder	1986	Elizabeth Hackney	Hackney	1998
Patricia Nussbaum	Nussbaum	1971	Cliff Atchison	Atchison	1978	Kevin Hunt	Hunt	1986	Haywood Ingram	Ingram	
Phyllis S. Smith	Smith	1971	Fred Pearlman	Pearlman	1978	Lisa A. Holden	Holden	1986	Mary Hoffer	Hoffer	
Sidney G. Campbell	Campbell	1971	Joseph Franks	Franks	1978	Spencer G. Lin	Lin	1986	R. R. Devane	Devane	
Steve Rose	Rose	1971	Mary Wahl	Anderson	1978	Andrew M. Mackler	Mackler	1987	Rob & Sue Stevens	Stevens	
Susan D. Deaton	Deaton	1971	Mrs. Elizabeth Allen	Stamey	1978	Dustin Dunn	Dunn	1987	Robert Southwick	Southwick	
W.R. (Bill) Stafford III	Stafford	1971	Ned L. Bryan	Bryan	1978	Michael T. Kauder	Kauder	1987	Steve and Deanne Lloyd	Lloyd	
A. Fleming Bell II	Bell	1972	Beth Depopas	Imbus	1979	Mrs. Lisa E. Sumner	Patterson	1987	Vic & Susan Cochran	Cochran	
Anne Ralls Brackett	Ralls	1972	David Sean Debnam	Debnam	1979	Charlotte Cline	Cahoon	1988	Additional Contributions		
Cranford A. (Chuck) Jones	Jones	1972	Edward G. Moore	Moore	1979	Gregg A. Kubis	Kubis	1988	Rev. Talmage Smith	Smith	1933
Cynthia Brooks	Watson	1972	Jeffrey J. Zaleon	Zaleon	1979	Lisa E. Adelman	Adelman	1988	Henry B. Perry III	Perry	1965
David C. Earnhardt	Earnhardt	1972	Mrs. Lisa M. McBane	Matthews	1979	Michael D. Anderson	Anderson	1988			
J. Fred Johnson Jr.	Johnson	1972	Mysoon Rizk	Rizk	1979	Mrs. Melanie L. Rains	Landrum	1988			
Janet Llewellyn	Llewellyn	1972	Stephen T. Evans CPA	Evans	1979	Mrs. Brien R. Deuterman	Rives	1988			
Jerry J. Phipps	Phipps	1972	Davis Lusk Jr.	Lusk	1980	Benjamin M. Fondry	Fondry	1989			
Jim Ennis	Ennis	1972	Francis (Buddy) Forde Jr.	Forde	1980	Joseph D. Brady	Brady	1989			
John A. Cocklereece Jr.	Cocklereece	1972	Martha W. Hughes-James	Hughes	1980	Kelly D. Yates	Yates	1989			
John M. Queenan	Queenan	1972	Mr. Charles Franks	Franks	1980	LTJG James Polickoski USN	Polickoski	1989			
Margie Phipps	Wright	1972	Mrs. Emil Mitchell	Burns	1980	M. Mitchell Brown	Brown	1989			
Mrs. Marilyn Lane-Morgan	Lane	1972	Mrs. Judy Rudy	Huffman	1980	Michael A. Stevens	Stevens	1989			
Mrs. Mary M. Cummings	McMillin	1972	Mrs. Kathianne E. Bond	Elmore	1980	Eileen J. Cirincione	Cirincione	1990			
Mrs. Susan K. Nichols	Kelly	1972	Steven Leonard	Leonard	1980	Holly Ellwanger	Parker	1990			
Nick Ellis	Ellis	1972	Emily Black	Allred	1981	Jill S. McClinton	McClinton	1990			
Robert W. Mays	Mays	1972	Kent C. Dickey	Dickey	1981	Kristian Hiers	Hiers	1990			
Vincent E. Knox	Knox	1972	Mrs. Jennifer Brooks	Dietz	1981	Mrs. Chandra M. Parker	Mimms	1990			
Gary W. Smith	Smith	1973	Mrs. Katherine Shannon	Clapp	1981	Caroline G. Hunt	Hunt	1991			
Jack Heberer	Heberer	1973	Tim Ellis	Ellis	1981	Cyndi V. Soter	Soter	1991			
Kenneth J. Ries	Ries	1973	Dr. John H. Krege	Krege	1982	D. Neal Leeper	Leeper	1991			
Mrs. Carolyn Howell RN	Beavers	1973	Frank (Eddie) Ingram	Ingram	1982	Heather M. Williams	Williams	1991			
Mrs. Deborah Marion	Dawson	1973	Scott Ernest	Ernest	1982	Mia Speckman	Speckman	1991			
Mrs. Patricia Lea	Wilcox	1973	Shelly B. Davies	Barker	1982	Ms. Adrienne Jones Fleming	Jones	1991			
Mrs. Sarah Hanson	Edwards	1973	Steve Soltesz	Soltesz	1982	Julie E. Sherbon	Sherbon	1992			
Mrs. Susan Lineberry	Perry	1973	Bill Sieredzki	Sieredzki	1983	Gretchen R. Spangler	Spangler	1994			
Mary J. Rayle	Johnson	1974	David N. Breece	Breece	1983	Laurel C. Hansen	Hansen	1994			
Mrs. Andrea Wuori	Adams	1974	James R. Covington	Covington	1983	Ryan L. Hunt	Hunt	1994			
Mrs. Beth Shwedo	Cameron	1974	Mrs. Kathryn Moran Silberman	Moran	1983	Mark W. Bobo	Bobo	1995			
Mrs. Kimberly Watts	Smith	1974	Ms. Terri E. Shoffner	Shoffner	1983	Alicia Dawn Williams	Williams	1996			
Mrs. Nancy Highfill	Shinn	1974	Trisha L. Houser	Houser	1983	Emily Aurand Swonguer	Swonguer	1996			
Mrs. Paige Cargal	Midgett	1974	Wendy L. Strobel	Joyce	1983	Jennifer Elizabeth Marsh	Marsh	1996			
Mrs. Stephanie (Pepi) McNair	Zeek	1974	Alan G. Atwell Jr.	Atwell	1984	Joseph Gray Moore	Moore	1996			
Mrs. Virginia Rybski	Shimer	1974	Amy Davis	Davis	1984	Kendall Elizabeth Bain	Bain	1996			
Richard H. Llewellyn Jr.	Llewellyn	1974	Cliff Ballard	Ballard	1984	Brian Lee Schiller	Schiller	1997			
Beverly Sizemore	Sizemore	1975	Karen Poulos MD	Poulos	1984	Leon Isif Bockis	Bockis	1997			
J. Michael Thomas	Thomas	1975	Mark Robertson	Robertson	1984						
James T. Highfill	Highfill	1975	Mrs. Bonnie Fulp	Mullen	1984						
Mrs. Kathy Dixon	Murray	1975	Mrs. Elizabeth Voiers	Freeze	1984						
Mrs. Lucy Pless	White	1975	Mrs. Leigh E. Covington	Elkis	1984						
Stephen Ussery	Ussery	1975	Mrs. Pamela Craig	Utter	1984						
Elliott A. Shoenthal	Shoenthal	1976	Ms. Margaret Sandin	Sandin	1984						
John C. Rollins	Rollins	1976	Robert R. (Randy) Shaw	Shaw	1984						
John E. Truitt	Truitt	1976	Steve Clowse	Clowse	1984						
Rick M. Hensel	Hensel	1976	Carolyn Williams	Buckner	1985						
Scott A. Matthews	Matthews	1976	Elizabeth Stiles	Stiles	1985						
Bryan K. James	James	1977	Jeffrey Sural	Sural	1985						
David B. Michaels	Michaels	1977	Mrs. Jennifer Bailey	Johansson	1985						
Harold J. Bradley III	Bradley	1977	Philip Macchia	Macchia	1985						

Please note: The preceding contributors made their donations between June 30, 1998 and May 31, 1999. Giving Levels reflected are cumulative. A complete list of donations received since November 1996 is available by request in writing. Thank you.

Grimsley High School
Madrigal Singers
CD Recording
CDs \$15 Cassettes \$10
23 Vocal Selections from
Madrigal Groups 1995-1999
Available at GHS Main
Office, New Garden
Nursery and Borders Book

As hard as we try to print all information correctly, please recognize that we are only human. We sincerely apologize for any incorrect information, misspelled names or gifts received but excluded from this list. Please inform us of any mistakes so that we may verify all gifts received and print the information correctly in the next newsletter.

Please note: The preceding contributors made their donations between June 30, 1998 and May 31, 1999. Giving Levels reflected are cumulative. A complete list of donations received since November 1996 is available by request in writing. Thank you.

Grimsley High School Madrigal Singers CD Recording

CDs \$15 Cassettes \$10

23 Vocal Selections from
Madrigal Groups 1995-1999

Available at GHS Main
Office, New Garden
Nursery and Borders Books

As hard as we try to print all information correctly, please recognize that we are only human. We sincerely apologize for any incorrect information, misspelled names or gifts received but excluded from this list. Please inform us of any mistakes so that we may verify all gifts received and print the information correctly in the next newsletter.

In Memory and in Honor of...

In memory of Ginny Silkworth '71.....by Burton F. Dodd '71

In memory of Clifford L. Goodman, Jr. '45.....by Clarke Goodman '81

In memory of Clifford L. Goodman, Jr. '45.....by Judy Goodman '45

In memory of Robert Vaughn McAlister '45.....by Stan Travis '45

In memory of her husband, Henry (Jack) Bilyeu '38.....by Carolyn B. Bilyeu '38

In memory of his brother, John W. Cline '42-43.....by Wayne A. Cline, Jr. M.D. '40

In memory of Gayle F. Barker '25, Jane Taylor '25, Ralph Lowe '25 & Carol Gordon Gallagher '25.....by a classmate

In memory of J. Kimball Harriman "Dedicated orchestra leader at GHS '41-63 and inspiring teacher".....by Dr. William Danenburg

In memory of his brother, David Trexler '79.....by Mark Trexler '77

In memory of Mary Durlan Fields.....by Bryce R. (Bobby) Holt '48

In memory of Sally Martin Lee '60.....anonymous

In memory of Lynn Duncan '64 & Wayne Burgess '64.....by Bryant Byrd '64

In memory of Kristen Leigh Ladd.....by Debra Ladd '70

In memory of Laura Tillett (head of GHS English Dept. 1923-33) "She was a marvelous teacher...".....by Mary C. Hines '33

In honor of Donovan Darnell "An outstanding teacher that imparted skills that helped me throughout my career.".....by Garnett L. Hughes '53

In honor of Joe Franks '78 and Charles (Chuck) Franks '80.....by Virginia Franks

In honor of Mrs. Ann Oakley "The best teacher I ever had anywhere.".....by Elliott A. Shoenthal '76

In honor of Herbert Hazelman.....by Peter Byrd '74

In honor of Herbert Hazelman "Who had more faith in me as a person than in my musical ability.".....by Florence S. Weaver '57

In honor of Greensboro Grimsley Senior High School.....by the Class of 1933

If you would like to remember someone with a donation, please send a note along with your gift.

Greensboro Grimsley Senior High School
Alumni & Friends Association
P.O. Box 4248
Greensboro, N.C. 27404-4248

BULK RATE
U.S. POSTAGE
PAID
PERMIT NO. 393
GREENSBORO, N.C.

Address Correction Requested

Please return entire page to the Alumni Association. Do not detach the Name Label above from the form below so we may record your responses accurately.

Please Join the Alumni & Friends Association Today!

- I would like to:
- ☐ Join Alumni & Friends for the annual membership fee of \$25
 - ☐ Be a Sustaining Alumni & Friends Association member for \$100
 - ☐ Give at the Principal's Society level of \$500-999
 - ☐ Join the Jamieson/Sawyer Foundation with a \$1,000-2,499 donation
 - ☐ Become part of the Ida Belle Moore Foundation with a gift of \$2,500-4,999
 - ☐ Honor GHS with a gift of \$5,000-9,999 as part of the Hazelman Foundation
 - ☐ Give \$10,000 or more in the name of the Routh/Phillips Foundation
 - ☐ Make an additional donation of \$ _____

☐ I am
interested in
helping with
the next
telephone
campaign.

Checks should be made to: GHS Alumni & Friends Association

Don't forget to ask your employer about matching gifts! Include your company's matching gift form with your payment.

Alumni Information:

☐ PLEASE CHECK IF THIS IS A CHANGE OF ADDRESS

Name _____ Student Name _____
Class _____ Spouse's Name _____ Children's Names _____
Address _____

Home Phone # (____) _____ Work Phone # (____) _____

Personal News (new job? family news? history? memorials?) Tell Us so we may include it in The Whirlie Wire!

☐ I would like information about becoming more involved with the committees of the GHS Alumni & Friends Association.

Please mail this form and your check to: GHS Alumni & Friends Assoc., P.O. Box 4248, Greensboro, N.C. 27404-4248.