



Greensboro Grimsley Senior High School Alumni & Friends Association

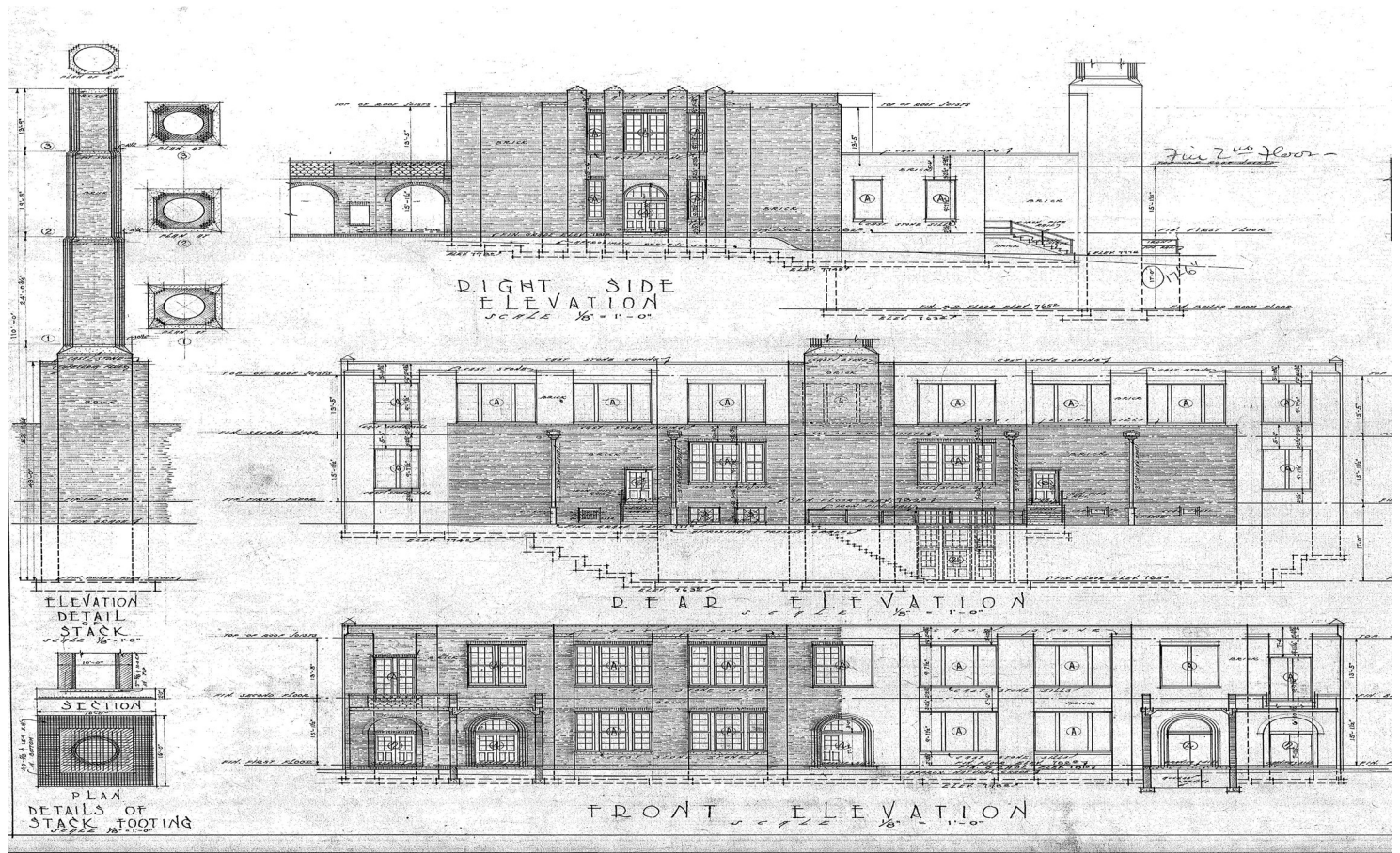


Preserving Grimsley's Architectural History

In September of 2009, on the 80th anniversary of the move of GHS from Spring Street to the Westover Terrace campus, Harry Bradley '87 undertook a project to digitally scan all existing original architectural drawings of Greensboro Senior High School as designed by renowned architect Charles C. Hartmann. The set consisted of 25 drawings, 21 of which survive. This set is historically important as it shows the complete vision that Mr. Hartmann had for the campus. Of particular note are the drawings for structures that were not completed in 1929 due to lack of funding. They include a Gymnasium, Shop Building, Household Arts Building and four Covered Walkways.

Although the Maintenance Department of the Greensboro Public Schools and later the Guilford County School System has copies of many of these drawings, our set, which has been carefully stored on campus for over 40 years, is far more complete. Digital scanning now allows for copies of our set to be added to those on file with the Guilford County Schools.

Perhaps the most significant example of the importance of these drawings occurred in 2000. That year, the voters of Guilford County passed a School Improvement Bond. Part of the Grimsley Senior High School share of those funds allowed for physical improvements to make our campus more compliant with the Americans with Disabilities Act. One major aspect of that compliance involved demolishing the badly deteriorated 1930s wooden covered walkways and replacing them with new ones built of brick. The great dilemma for the architects of the new walkways was what design would be architecturally appropriate for our historic buildings. That situation was quickly resolved when the GHS copy (the only surviving copy) of Mr. Hartmann's walkway design was brought to their attention. His plan showed a series of brick arches set between piers. Our new walkways, although not exact replicas, are directly based on the original plans. Ironically, after 73 years, the front facade of GHS was at long last completed largely as Hartmann had envisioned.



Greensboro Grimsley Senior High School Alumni & Friends Association Board of Directors

For more information or to contact your Alumni Association board members, please email us at whirlies@triad.rr.com.

Phil Weaver, '65, President
weaverp2@juno.com

Mary Jane Beavers, '73, Vice President
mjbeavers@aol.com

Mary Johnson Rayle, '74, Treasurer
mjohnray@triad.rr.com

Dawn Swanson, '84, Secretary
dsb897@yahoo.com

Rick Andringa
andringa@triad.rr.com

Missy Bateski, '84
mbateski@carolina.rr.com

Ruth Comer
jcomer10@triad.rr.com

Joe Franks, '78
franksj@gcsnc.com

Harlan Frye '79
Harlan.Frye@ncmail.net

Bo Rodenbough
melabo@triad.rr.com
brodenbough@brookspierce.com

Roberta Rohan, '82
rohanr@gcsnc.com

Bob Sawyer, '55
rssawyer61@bellsouth.net

Tim Weikel, '66
tweikel@att.net

Richard Zaruba
rzaruba@triad.rr.com

Honorary Board Members

Carl Carlson '32
Herman Cone, Jr '41
Alan W. Cone 43
Bradley E. Faircloth '48
E. S. "Jim" Melvin '52
Mike Weaver '55
R. Stuart Albright '87
Christopher D. Ingram '87
Ethan Albright '89

Since I last corresponded with you the Board of Directors has been busy with several projects. We have completed our \$15,000 commitment to the campus security camera project and the school system has matched that amount. Because of your generosity, Grimsley now has \$30,000 in new security equipment that it would otherwise be unlikely to have.

Every tree we planted on the front lawn survived the summer drought and within a few years will be of some consequential size. Roberta Rohan '82, Board member and Math Department Chair, has the school's Environmental Club monitoring the trees' progress.

Ms. Bobbi Nicely and her sister have funded a new scholarship for students who will enroll in a nursing program. The award will be a onetime annual payment of \$2000 to the school the winner will attend. The Alumni Association Scholarship Committee will select the recipient. We now administer eight scholarships annually which provide \$14,500 for Grimsley students to further their educations. Donors to the Alumni Association can always designate their contributions to be placed in the scholarship fund.

Whirlie Walk will re-emerge this spring. Roberta has again stepped forward and grabbed the reins of this fund-raiser. It is being revived with the strong support of Principal Anna Brady. For more information, see page 5.

Our next capital campaign is ambitious but one all Whirlies can easily take an interest in; the renovation of the auditorium. Richard Zaruba (Alumni Board member, father of a Grimsley graduate and retired Drama teacher at Grimsley) is heading up this massive project and has summarized it on page 7. We feel we need to step in because the school system is obligated to do only the minimal repairs needed. For instance, maintenance would be a coat of solid colored paint whereas we would want the original colors and designs to remain. I'm pretty certain that if we don't come to the rescue, our grand old lady may never regain her former elegance.

please become a friend of your Alumni Association. The preponderance of younger folks seem to relate well to this medium so we will be utilizing it as another means of communication.

Please consider joining us as we continue to make improvements to our school. Many people give money to their colleges and universities but ignore their high schools. I assume that is because it expected that the taxpayers are taking care of secondary schools. Ironically, huge public universities like many in this state are also taxpayer funded but receive millions of dollars annually from their graduates. I submit that your educational foundations were at least equally formed by Grimsley as by your colleges. We are good stewards of your donations and I challenge all to match your collegiate charitableness with that to your high school. We may not have such slick publications or offer you special seating at events like the colleges do, but your money will be put to good use.

Phil Weaver '65



6809 Alumni Association

| | |
|------|----------------------|
| 1128 | Band Boosters |
| 4618 | Vocal Music Boosters |
| 4651 | Athletic Boosters |
| 4910 | Science Olympiad |
| 4929 | Orchestra Boosters |
| 4962 | PTSA |

CLASS OF '71 INFORMATION NEEDED:

The names of the male and female students that received the \$25 US Savings Bond for the recognition of "Best All Around Senior Girl and Senior Boy". These awards were presented at graduation just before the end of the ceremony and were voted on at graduation rehearsal; hence, the winners were not included in the photos of the Superlatives in the '71 Whirligig. If you received this award or know who did, please contact Peter Byrd '74 at (703) 533-1939 or by email at Byrd903@aol.com.

To those who understand Facebook,

Academics



Audrey Boyles
Alumni Association
UNC-Chapel Hill



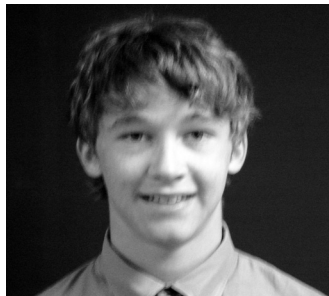
Elena Aronson
Alumni Association
Wheaton College



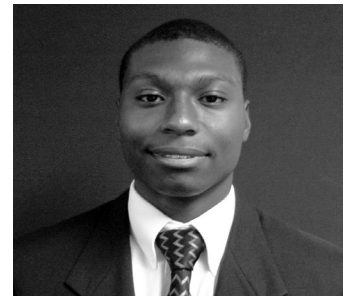
Mary McAllister Holland
Melvin G. Coleman Memorial
UNC-Chapel Hill



Rachel Bradley
Class of 1956
NC State



Scott Hammer
Lee Guard Memorial
UNC-Chapel Hill



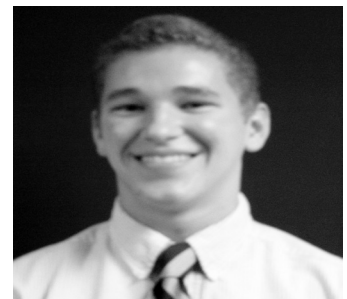
Robert Greene
Alumni Association
NC State



Will Curtis
Alumni Association
UNC-Chapel Hill



Shannon Diehl
Lee Guard Memorial
Elon University



William Leimenstoll
Lester E. Gross III Memorial
UNC-Chapel Hill

The Alumni Association oversees the awarding of three to four general scholarships per year that are funded by association donations. The Alumni Association also manages the Melvin G. Coleman Memorial Scholarship, funded in memory of the father of a grad, the Lester E. Gross III Memorial Scholarship, funded in memory of a 1976 graduate and soccer athlete, the Class of 1956 Scholarship, funded by the Class of '56, and the Lee Guard Memorial Scholarship, funded in memory of the father of two Grimsley athletes.

2009 Scholarship Recipients

A Donation of \$200 to the Alumni Association will.....

...Cover part of the \$350 cost to place the historic architectural blueprints onto the computer where they can be used for maintenance and improvements

...Cover the cost of printing the Senior Awards program recognizing the newest outstanding soon to be alumni of GHS

...Cover 10% of one of the scholarships given by the association to an outstanding Senior

...Partially cover the cost of mailing newsletters to one class of alumni having their class reunions in 2010.

...Pay for 1/3 of the cost to replace older championship banners in the gym.

...Pay 10% of the annual teacher of the year award stipend given to recognize one of the fine and dedicated teachers who are the backbone of GHS faculty.

...Pay for 1/3 of the oldest GHS tradition-- the Senior Tea

...Partially fund replacement of old equipment in the Art and Science Departments

...Pay for 15% of the Staples gift cards given to teachers to help defray the cost of school supplies



1959 Senior Class Tea



Spencer Levy, Grade 12, Digital Photography, AP 2-D Design



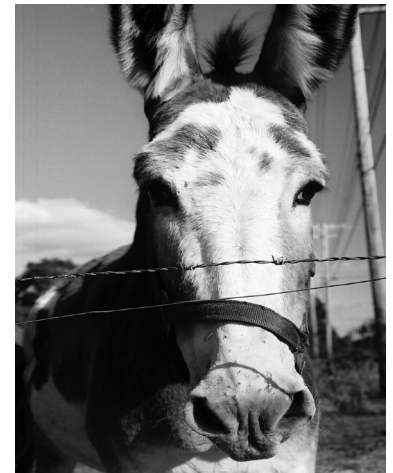
Kyle Freeze, Grade 11, Pen and Ink, Art 1



Angele Gray, Grade 10, Colored Pencil, Honors Art and Design



Caroline Creech, Grade 11, Colored Pencil, Honors Art and Design



Chase Dobert, Grade 12, Digital Photography, AP 2-D Design

Athletics

By Joe Franks '78



With the winter season beginning, I would like to give you some highlights from the fall season. Our Football team took on a new look under new head coach Martin Samek and many new assistants. The Whirlies were a young crew that had some challenges early on, but by the time the conference season rolled around, the Whirlies had 3 wins to finish in a tie for 3rd place. Martin is an enthusiastic and optimistic young coach and I think he will be able to build a good program here at GHS. The Men's Soccer team was the conference runner-up and at this writing has made it to the sweet 16 of the State Tournament! Our Volleyball team was the conference and conference tournament champion and advanced to the State playoffs. Our Cross Country teams continue to see excellent participation numbers. Both teams ended in as conference runner-up and we had three runners (2 men and 1 woman) advance to the State Meet. Our Women's Tennis team had an outstanding season as they were conference champions and defeated perennial powerhouse Page multiple times and we made it to the State semi-finals! The Women's Golf team had another successful season

as we repeated as champions in the conference and Regional. The Whirlies finished in a tie for fourth at the State Tournament and senior Molly Plomaritis placed 6th individually in a very tough field. Over the past two seasons, the golf team had an amazing 95-16-5 record.

A couple of really cool things happened with regard to the Grimsley-Page Rivalry. First, the GHS/PHS Golf Tournament held at Bryan Park continues to grow and was a huge success this year with both courses filled! The folks that have put this together have really done an outstanding job. Also, the Grimsley-Page football game was been added to the "Great American Rivalry" series sponsored by the Marines. The organization also does a "great players" type of recognition. This year Grimsley chose Paul McGee from 1999. Paul rushed for over 250 yards and was a starting linebacker on the team that defeated Page in the regular season for the first time in 28 years.

We hope to see you this winter and spring on our campus to attend some of our games, meets or matches.



Whirlie Walk

Saturday April 10, 2010

Registration begins at 9
Run/Walk begins at 10

The 2 mile run/walk will leave and finish at Jamieson Stadium
Music & Refreshments Afterwards

This event was a big fundraiser for us in the past. Current Grimsley students raised money through sponsorship and competed for prizes based on amounts raised. We'd like to open up this year's walk to Alumni as well. So please, mark your calendars and plan to walk either with classmates from the area or your family. Participants with at least \$25 in sponsorship will get a free Whirlie Walk tee shirt. If you're not in the area or can't attend and want to help with the cause, you can send a check to: GGSHSAFA, P.O. Box 4248, Greensboro, NC 27404-4248



Alumni Association board member Mary Jane Healy Beavers '73 recently suggested that we begin an "Ask the Historian" column for the alumni newsletter, where questions about GHS's history could be submitted to school historian Peter Byrd '74. If you have a question you would like to submit, please send it to "whirlies@triad.rr.com," or directly to Peter at "Byrd908@aol.com."

ASK THE HISTORIAN

by Peter Byrd '74

Recently, I have been asked some health-related questions about GHS: "How has the swine flu impacted Grimsley this year, and have other major outbreaks of illness over the years directly affected the school too?" In at least one significant instance--the Spanish flu pandemic of 1918--the answer to that second question is a definite "yes."

Over the last few months, there has been much concern, of course, about the H1N1 influenza--commonly known as the "swine flu"--and the fact that the hardest-hit group has been young people, including high school-age students. At Grimsley--where a number of students and faculty have had the illness this fall--pro-active efforts by the administration, faculty, staff, and parents have had a real and positive impact on helping the GHS community stay as healthy as possible. For example, there have been bottles of hand sanitizer placed around the campus, signs put-up and announcements made reminding students of the importance of regularly washing their hands and covering (and "elbowing") coughs, and extra efforts made to regularly sanitize desktops, handrails, and other common surfaces.

During the fall of 1918, the "Spanish flu" (which is a bit of a misnomer, since research now indicates that it actually originated in the heartland of the United States and not in Europe) pandemic killed millions of people worldwide. During October of that year, the illness hit North Carolina particularly hard, and probably the best-known victim in the state that month was the president of the University of North Carolina, over in Chapel Hill.

I had the opportunity several years ago to read the Greensboro school-board minutes from the fall of 1918, and it was clear that while some common-sense

precautions were being followed in the schools, the board was taking a very low-key, stand-back-and-wait approach to how they felt the schools should deal with a possible major outbreak of the Spanish flu in Greensboro. The City Health Officer spoke at the October board meeting, and he basically read the members the riot act and told them there was not a moment to lose in trying to avert a human disaster, given the heavy toll the flu was having around the state and elsewhere at that moment. Fortunately they heeded his strong words about the immediate danger, and the board promptly closed the school system, including Greensboro High School, for an entire month--the longest such school closure in Greensboro's history-- which seemed to have a real impact on the situation.

Interestingly, the schools reopened on Monday, November 11, 1918, the same day the Armistice was signed ending the First World War. The ensuing celebrations--naturally to be expected, and begun over the weekend--caused great concern and alarm among the city's physicians relative to the continuing efforts to contain the flu locally, as recounted in the school-board's minutes a few days later:

"The influenza situation, however, became so alarming on Wednesday [November 13], due it is thought by some of the leading physicians to the fact that two large mass meetings were held in rather close buildings on Sunday afternoon and Monday evening, and also to the fact that a boisterous and rather crowded celebration of the declaration of peace took place in our town during the whole day on Monday, November 11th."

"Immediately upon the re-opening of schools the principals were instructed to carry out the same

Calling all Reunions



If your class is planning a reunion within the next 18 months, please contact Mary Jane Beavers at 336.852.1038 and share it with fellow alumni by emailing us at mjbeavers@aol.com or whirlies@triad.rr.com

'50 60th reunion in 2010. Contact Bill Wrenn at (336) 282-1336 or wwrenn1@triad.rr.com

'60 50th reunion set for 6/05/10 at the Downtown Marriott. Contact Sandra Ricketts at sricketts1960@triad.rr.com.

'70 40th reunion set for the weekend of 7/30/10. Contact Carolyn Phillips at CPhillips80@triad.rr.com.

precautions which had been observed during the few days before the schools were closed, and these instructions were being carried out." As is the case presently at GHS with the swine flu, the community worked hard in the fall of 1918 "...to prevent the spread of the [Spanish flu] infection caused by the schools, themselves."

**Greensboro Grimsley Senior High School
Alumni & Friends Assoc.
P.O. Box 4248
Greensboro, NC 27404-4248**

PSRT STD
U.S. POSTAGE
PAID
Permit #409

Greensboro, NC 27405



1960 Student Council